

In the wake of cuts to mental health services, at-risk students are adrift. They need support, guidance, and a lifeline. Clinical Psychologist and Master Teacher Dr. Adolph "Doc" Brown III et al.(2010) developed a measurable and best practices solution known as **Teachers As Mentors, Professional School Based Mentoring Services (PSBM)**. **Teachers who exhibit the 5Cs, Connection, Candor, Constructive, Compassion, and Commitment are eligible to volunteer and receive training to become a Teacher Mentor.** Collectively the 5Cs promote trust, empathy, and sustained engagement, creating a structure that supports the student both personally and academically. For over 20 years, Doc Brown has been a trusted ally, turning challenges into measurable successes. His proven Teachers As Mentors methods empower students to navigate their struggles via trained teacher-mentors, wellness circles, human-libraries, student assemblies, and parent engagement evenings. Together, we can bridge the gap, ensuring each child feels seen, heard, and ready to soar. With a raving fan, students feel accepted, validated, appreciated and treated fairly.

**Your Students. Our Passion.™**

***Higher Test Scores, Lower School Suspensions!***

The Teachers As Mentors, Professional School Based Mentoring™ (PSBM) Philosophy and Service Delivery are "Best Practices" resources developed by Dr. Adolph "Doc" Brown III used to build capacity, effectively engage family & community, and achieve positive student outcomes. The scope of work includes partnering with education professionals to provide measurable solutions for their greatest challenges, starting with the following services:

- **ALL STAFF** Keynotes, Workshops, & Master Classes
- **"Super Saturdays"** facilitated by Teacher Mentors, Administration, Parents, & Community Partners - **that doesn't teach academics; we teach kids how to be with one another. Safety, belonging, and emotional growth are part of the curriculum.**
- Dr. Glen Lineberry & Dr. Janet Gibson **Professional Development via School Leadership Modules and Coaching**
- The Student Success Team **"ALL-Grade Level Student Assemblies" on Character, Choices, & Consequences**
- Doc Brown **"Parent Universities"**
- Doc Brown **"Community Calls To Action"**
- Doc Brown & Team **Promotes Mental Health Awareness, Provides Support for Mental Health Challenges, & Fosters Resilience Through Education and Community Engagement**
- **Re-Engagement "Super Saturday's Lunch & Learn"** with Tutors, Mentors, & Coaches (TMC)
  
- **"The Human Library"** Because Everyone Has A Story!



Teachers As Mentors - Professional School Based Mentoring Services (PSBM) recognize that our highest risk students DO NOT constitute a homogeneous cluster of youth with like characteristics. The PSBM services delivery skillfully and willfully addresses the gifted learner with anxiety issues to the angry learner with family problems.

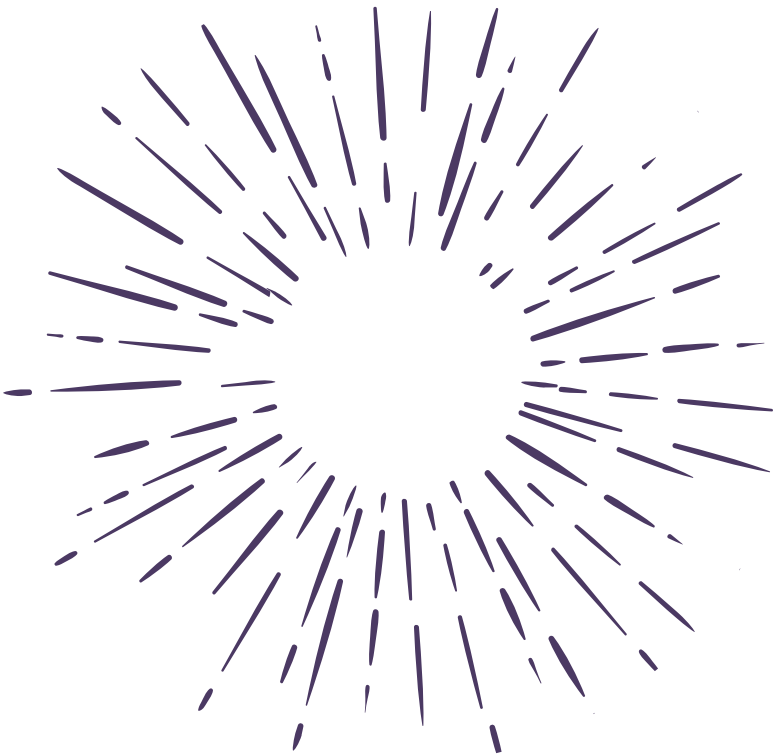
- **The Teachers As Mentors PSBM Services** are designed to provide assistance to teachers and students, not an additional burden.
- **The Teachers As Mentors PSBM Services** are NOT a “Here we go again program!” There is invested support over the next 1-2 years to improve the academic and personal lives of our highest risk students.
- Campus referrals will go through a school-based committee (The “Failure Is Not An Option Committee”) to determine students in greatest need within the school.
- **Teachers As Mentors** will be assigned to campuses and maintain a caseload of 5-10 students.
- **Teachers As Mentors** receive on-going specialty professional development, intense supervision and monitoring, and can participate in book studies leading to certification as a Certified Professional School Based Mentor.
- Online forms for documentation of Teacher and Parent Input on student progress, Parent Permission, and End-Of-Year assessment will be available.

Remote video URL



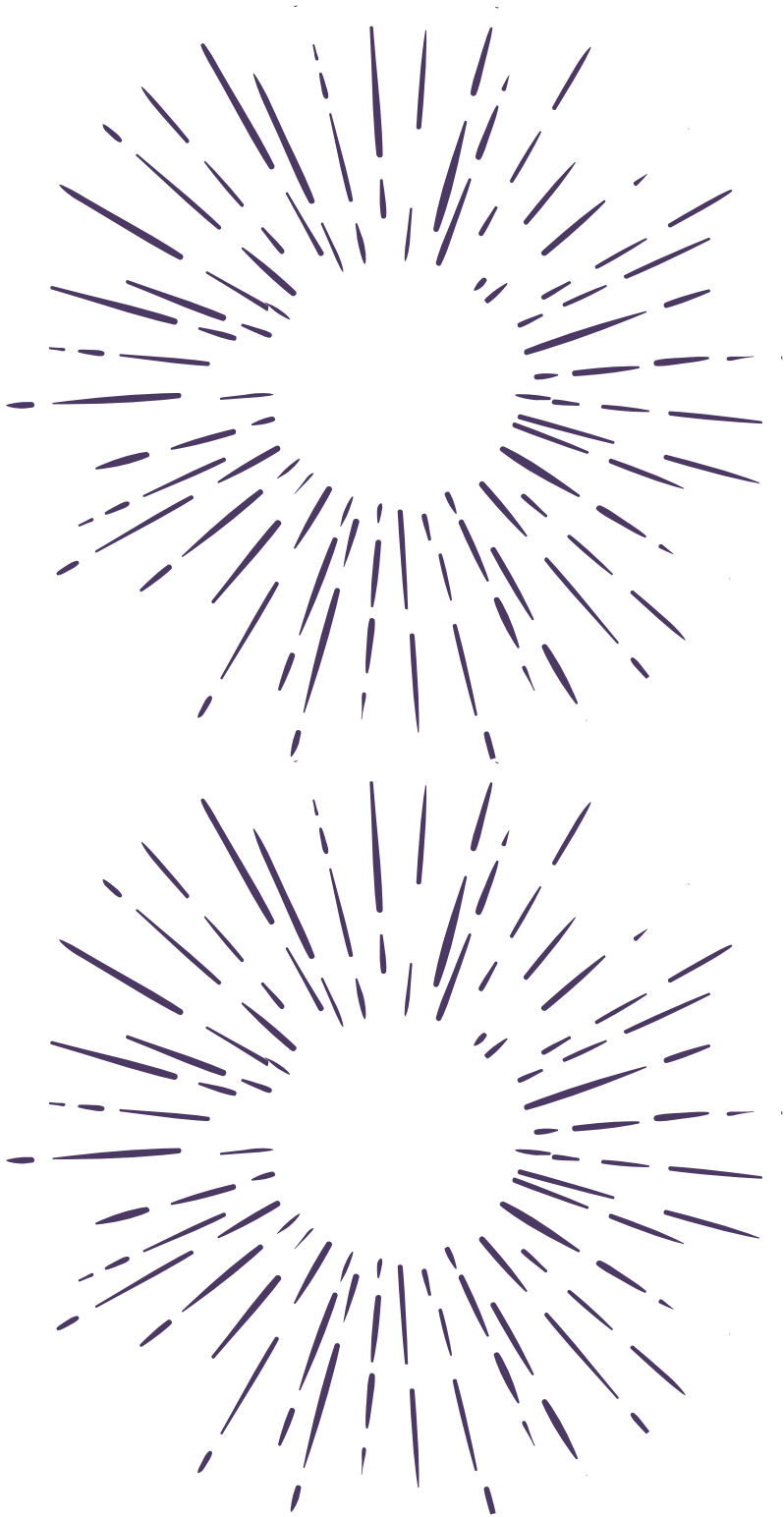
**Join the movement! Become a “Wheelbarrow Wellness” school today.** Picture a place where every student is seen and heard. Mentors stand ready, hands outstretched. They lift spirits and ignite hope. No more isolation, no more struggle alone.

Together, we can create a safety net. Every student deserves a chance to shine. Let’s build a community that nurtures and empowers. Say yes to support, yes to growth! Be the change. Transform lives. Don’t let anyone fall through the cracks. Embrace the journey of lifting each other up! Together, we can make a difference. Become a “Wheelbarrow Wellness” school today!



## **Family & Community Participation**

Community Empowerment



## **Your District Deserves These Services!**

The multiple dimensions of the student's life is effectively addressed with the ABC's:

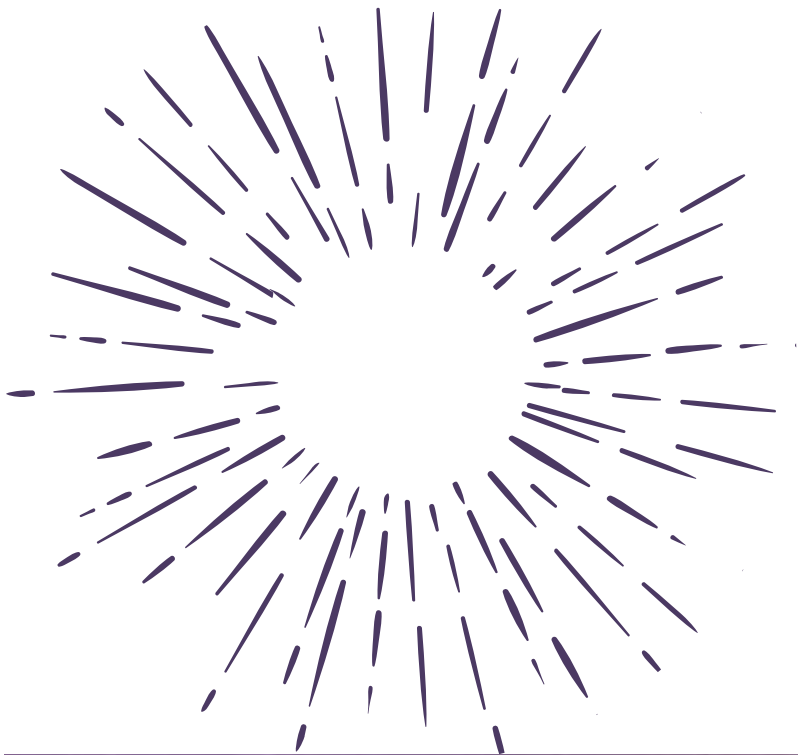
**A** Academics

**B** Behavior

**C** Community & Family Support

- **The Teachers As Mentors, PSBM Philosophy** is a proven evidenced-based research strategy for the highest risk students in primary and secondary settings.
- **The Teachers As Mentors, PSBM Philosophy** holistically addresses the student's needs, provides the appropriate resources and measures the outcomes.

- **The Teachers As Mentors, PSBM Philosophy** addresses the following areas using SMART goal setting: Academic Attitude, Behavior Targets & Curriculum (ABC's)



---

\*Required Field

Please completely fill out the form below, click "submit", and a representative will contact you within 24 hours.

Name

Email

Organization Name

Address

State  ▼

Country  ▼

postal code

Phone

What problem is your organization experiencing?

What challenge is your organization experiencing?

What breakthroughs has your organization experienced?

What sensitive issues exist within your organization?

What would make this consultation or training really "special" for your group?

Desired Start Date

Desired Start Date: Month  ▼

Desired Start Date: Day  ▼

Desired Start Date: Year  ▼

CAPTCHA

Submit

---

**Source URL:**

<https://www.docspeaks.com/teachers-mentors-professional-school-based-mentoringtm>